

Parkview Health Blood Culture Collections



BacT/Alert SA Standard Aerobic Bottle

Specimen Prep: No Venting

Acceptable Volumes/Types: 10.0 mL of Blood or Normal Sterile Body Fluid (SBF)

BacT/Alert SA Standard Anaerobic Bottle

Specimen Prep: No Venting

Acceptable Volumes/Types: 10.0 mL of Blood or Normal Sterile Body Fluid (SBF)

BacT/Alert SA Standard Pediatric Aerobic Bottle

Specimen Prep: No Venting

Acceptable Volumes/Types: 4.0 mL of Blood

Bottle Preparation

Bottles should be protected from light before and after use.

Inspect the bottle surface, the media, and the sensor. Ensure that the broth is clear and the sensor is intact and is a blue-green color.

Do not use the bottle if the sensor is yellow.

Remove protective flip top overcap.

Note: The septum is not sterile and must be disinfected. Cleanse the septum with 70% alcohol or iodine solution. Allow to dry 1 minute before inoculation.



Parkview Health Blood Culture Collections

Skin Preparation

One of two methods may be used for site preparation. * **Mediflex ChloraPrep" Method:**

- After location of the vein, scrub the venipuncture site with ChloraPrep for 30 seconds.
- Allow the site to air dry before venipuncture. Do not re-palpate the vein.

OR > Traditional Method:

- After location of the vein, scrub the venipuncture site with 70% alcohol for a minimum of 30 seconds.
- Apply iodine solution (1 - 2% tincture of iodine for 30 seconds) in concentric circles away from the puncture site covering a circular area 1 to 2 inches in diameter.
- For patients with iodine sensitivity, cleanse with alcohol for 60 seconds.

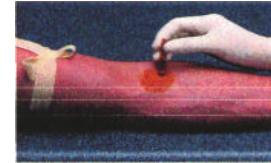
Allow the site to air dry before venipuncture. Do not re-palpate the vein

One of two methods may be used to obtain the sample and inoculate the bottles.

*• **Needle and Syringe:**

- Draw appropriate amount.
- Directly inoculate the bottles, using the syringe markings as a guide for correct volume.

OR T Direct Draw with Blood Collection Set: Use the BacT/ALERT Blood Collection Adapter Cap and Insert.



Parkview Health Blood Culture Collections



1. Connect the Adapter Cap to the luer connector of the blood collection set.
2. Perform veni-puncture. When the needle is in the vein, secure it with tape or hold it in place.
3. Place Adapter Cap on the aerobic BacT/ALERT culture bottle septum and press down to penetrate and obtain blood flow. Hold the Adapter Cap down on the bottle
4. Using the fill indicator lines on the label, obtain the specified amount of blood. Move the Adapter Cap from the aerobic bottle to the anaerobic bottle (if required) and continue the collection.
5. If additional blood is required for other tests, place the Adapter Insert into the Adapter Cap and snap into place. This makes the cap compatible with vacuum collection tubes.
6. After blood collection is complete, remove the Adapter Cap from the culture bottle and then remove the needle from the patient's vein

Tips' n' Hints

Recommended blood to broth ratio is 1:5 to 1:10. As the volume of blood drawn is increased, the yield of positive cultures increases. Optimally, 20ml of blood should be drawn from adults (10ml per bottle).

When labeling the bottles, do not cover the peel-off section of the barcode labels or the lot numbers.

For best volume control, mark fill level on side of bottle prior to collection.

Do not overfill the bottles, as this may cause false positive readings.

When using BacT/ALERT Adapter Caps, be sure luer is connected firmly and the needle is straight when entering and leaving the septum. Twisting or turning the bottle may increase the chance that the sheath may not retract and reseal.

*NOTE: BacT/ALERT Adapter Caps and Inserts should always be used in conjunction with a blood collection set.